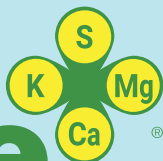


# Polysulphate



**S**

**48% SO<sub>3</sub> (19.2% S)**  
As sulphate, essential constituent of all proteins

**K**

**14% K<sub>2</sub>O (11.6% K)**  
As potassium sulphate, secures yield and quality

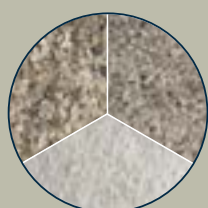
**Mg**

**6% MgO (3.6% Mg)**  
As magnesium sulphate, for high photosynthesis

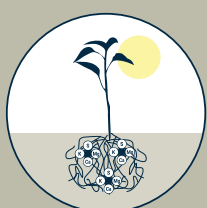
**Ca**

**17% CaO (12.2% Ca)**  
As calcium sulphate, for strong and healthy crops

## Key benefits of Polysulphate®



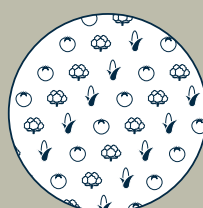
Available in granular, mini granular and standard grades



Fully soluble with all nutrients available for plant uptake



Prolonged release sulphate; less prone to leaching



Ideal natural source for all crops and soils



Good and uniform spreadability in the field, spreads to 36m



Increases yields and quality



Improves crop health and vigour



Ideal for chloride sensitive crops



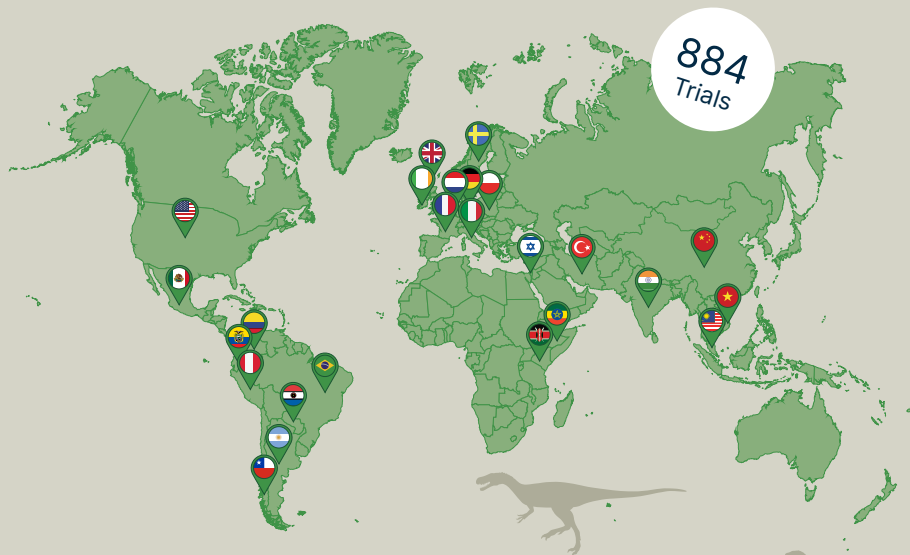
Approved for organic agriculture



Environmentally friendly; low carbon footprint

## Polysulphate trials around the world

Agave	Cotton	Pepper
Alfalfa	Cucumber	Pineapple
Almonds	Durian	Pistachio
Apples	Eucalyptus	Pomegranate
Avocado	Flax	Pomelo
Banana	Garlic	Potato
Barley	Grapes	Rice
Beans	Grass	Rocket salad
Black pepper	Groundnut	Sesame
Blueberry	Fescue	Soybean
Broccoli	Kiwi	Strawberry
Brussels sprouts	Leek	Sugarbeet
Cabbage	Lilium	Sugarcane
Canola	Melon	Sunflower
Carrot	Oats	Sweet potato
Cassava	Oil palm	Tea
Chickpea	Oilseed rape	Tobacco
Chinese cabbage	Olive	Tomato
Chrysanthemum	Onion	Turmeric
Clover	Oranges	Endives
Cocoa	Papaya	Watermelon
Coffee	Pastures	Wheat
Corn	Peas	



-1,200m

Polyhalite, found 1,200m beneath the North Sea, was deposited 260 million years ago, before dinosaurs lived